



“Guess what?

**You can still live well
with dementia”**



Developing Kent into a ‘Dementia Friendly Community’



People living with dementia would like to:



Live the life we had before diagnosis

Find our way around and be safe

Access local facilities as we used to

Maintain our social networks so we feel we belong in the community

Pursue hobbies and interests and “go out” more

Support others in their community by volunteering



Can you tell us a little about how your family and the person with dementia have been affected



other family members dont visit

alone
worried about family

difficult to live with
dont want to be a burden

stressful
hard to come to terms with
unable to recognise people more patient
sad
feel useless
24hr job
frustrated
wearsome
needs to be in care home
whole family affected
lack of sleep
more aware
constant repeating



14/07/2014

Developing Kent into a 'Dementia Friendly Community'



What's the solution?



Dementia friendly communities are where we want to be



Local Dementia Action Alliances are how we get there

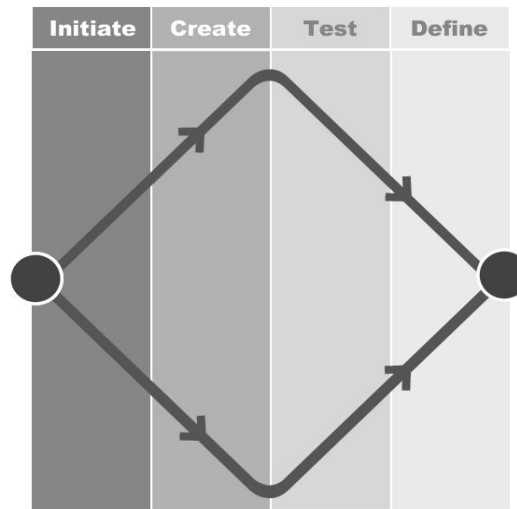


Dementia Friendly Communities

KENT

Health and Wellbeing Board
Kent Dementia Action Alliance

**Continuous dialogue
to ensure all improvement is
grounded in the needs and
aspirations of people living
with dementia in Kent**



**Building on existing
good practice**

Training and awareness

New ways of working

LOCAL

Health & Well-Being Boards

Local
Alliance

Local
Alliance

Local
Alliance

Local
Alliance

Local
Alliance

Local
Alliance

Local
Alliance

Local
Alliance

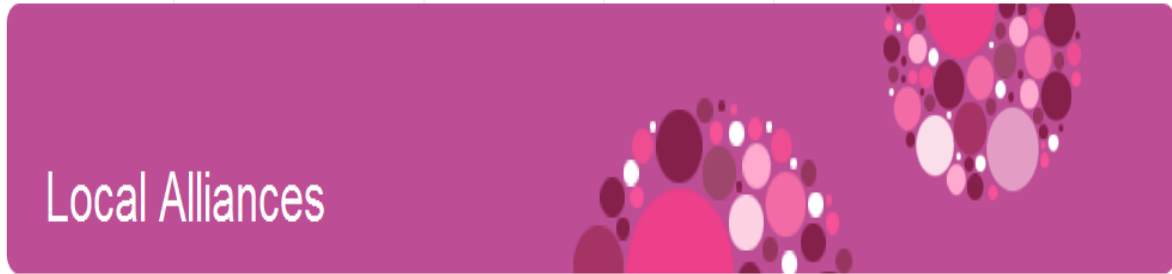
Local
Alliance

Local
Alliance

Local
Alliance

Local
Alliance

Refreshed web platform



Home > [Local Alliances](#)

In this section

Local Alliances

East Midlands

East of England

London

North East

North West

South East

South West

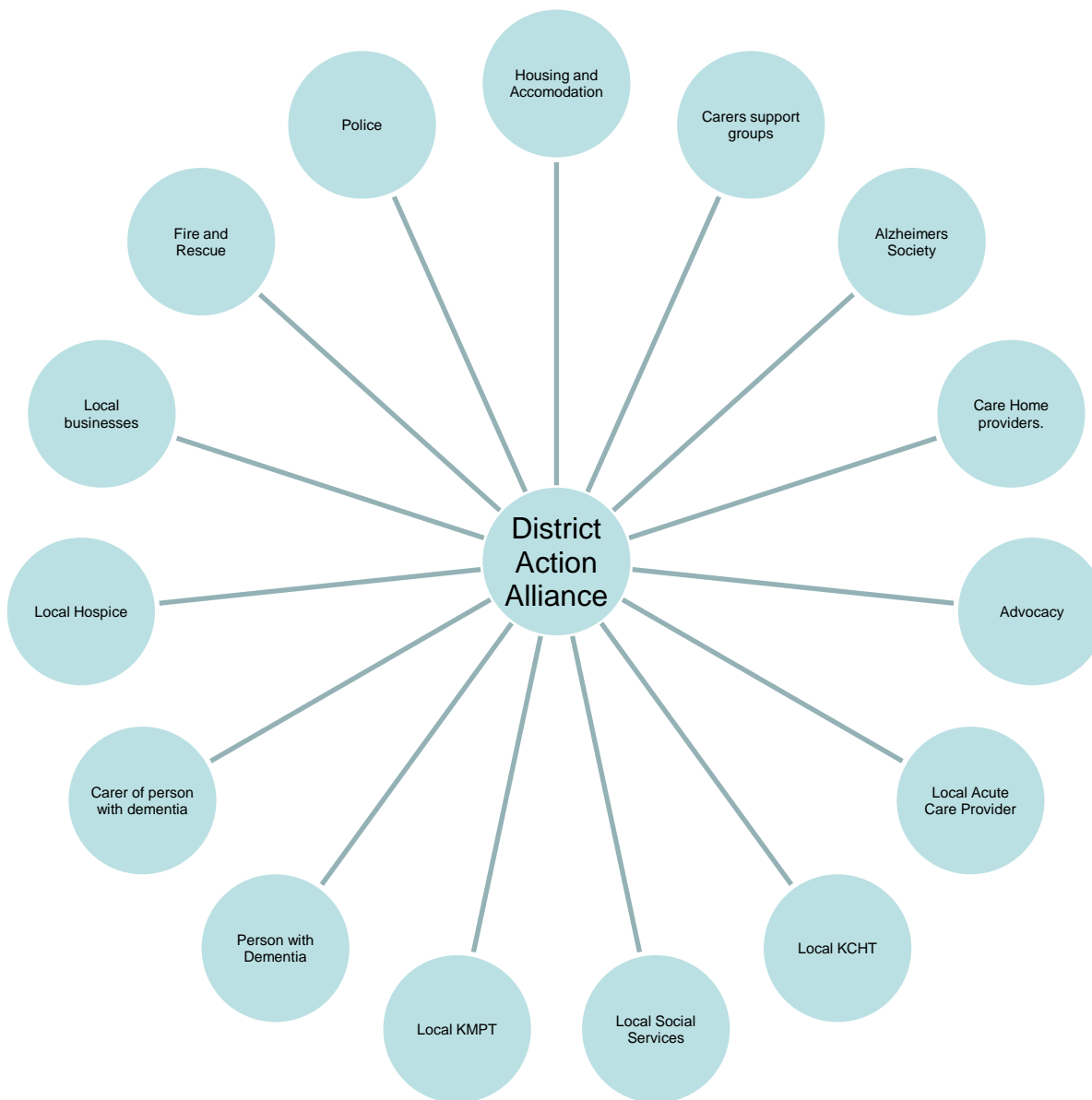
Kent Dementia Action Alliance

The Kent Dementia Action Alliance has evolved from a community necessity to better meet the needs of people with dementia. It had its roots in a Whole System collaborative and a desire to integrate social care and mental health services. In recognising the need for people to Live Well with Dementia it subsequently identified the need to involve a wider range of partners including police forces, fire and rescue services, local authorities, local transport, charities, community groups, businesses, care providers, health trusts, and people living with dementia and their carers.

Desired outcomes delivered by individual member's action plans range from ensuring people with dementia have choice and control over decisions about their lives, to feeling a valued part of family, community and civic life. It is not a statutory body and has no legal authority. Accountability for dementia services remains through the existing legal process of each organisation

Alliance Members

- Academy FM Folkestone
- Age UK Hythe and Lydinge
- Alzheimer's & Dementia Support Services
- Alzheimer's Society
- Darent Valley Hospital, Dartford & Gravesham NHS Trust
- East Kent Hospitals University NHS Trust
- Furley Page LLP
- Home Instead Senior Care (Dover)
- Kent County Council
- NHS Ashford Clinical Commissioning Group



Developing Kent into a 'Dementia Friendly Community'





Ashford

- Community event 18-06-14
- Ashford Dementia Action Alliance
- Farrow Court Dementia Friendly
- Dementia Friendly Shopping
- Ashford Borough Council Dementia Friends
- CCG gap analysis commissioning plan and Z cards



DFC Projects



THANET | Intergenerational Art Installation | East Kent College fundraising, Friends and Dementia Diaries | Minnis Bay Day Centre

CANTERBURY iPad project | Film Project | Solicitors Friends sessions | Whitstable and H-bay working group established.

DOVER Eastry Community | Sandwich GP Surgery Friends Sessions | Pfizer UK donation to Age UK | Community event | Faith communities

SHEPWAY Intergenerational Dance project | Multiagency working group | Academy FM Radio Project | BrightShadow and Broadmeadow



Working towards a Dementia Friendly Kent



DFC Projects



DARTFORD Dartford Council frontline staff Friends sessions | 'Dementia Friendly' Asda | DASco School work | 'Dementia Friendly' Bluewater commitment to Shop Safe and Friends sessions

GRAVESHAM Council have Champion and commitment to sessions | Intergen Life Story Project

SWANLEY Orchard School hosting community 'drop in' | 'Teen' social media presence by DofE volunteers | Leisure centre healthy mind/body | WKHA Friends sessions | Social care students Rural Age UK ADSS project

TUNBRIDGE WELLS Faith groups Friends session | TW Care centre Open Day | Dementia Themed over 50s Forum

TONBRIDGE & MALLING Dementia Friendly Village | Libraries & Shared Lives project

SEVENOAKS (Excl Swanley) Dementia Friendly DC | Community leisure services

MAIDSTONE High street Shop Experience | DofE Care Home project



Working towards a Dementia Friendly Kent



www.socialinnovation.typepad.com/silk



SILK.team@kent.gov.uk

01622 694639

@SILKteam

#dementiaKent

Facebook

Developing Kent into a 'Dementia Friendly Community'

